

baumann

active | alignment

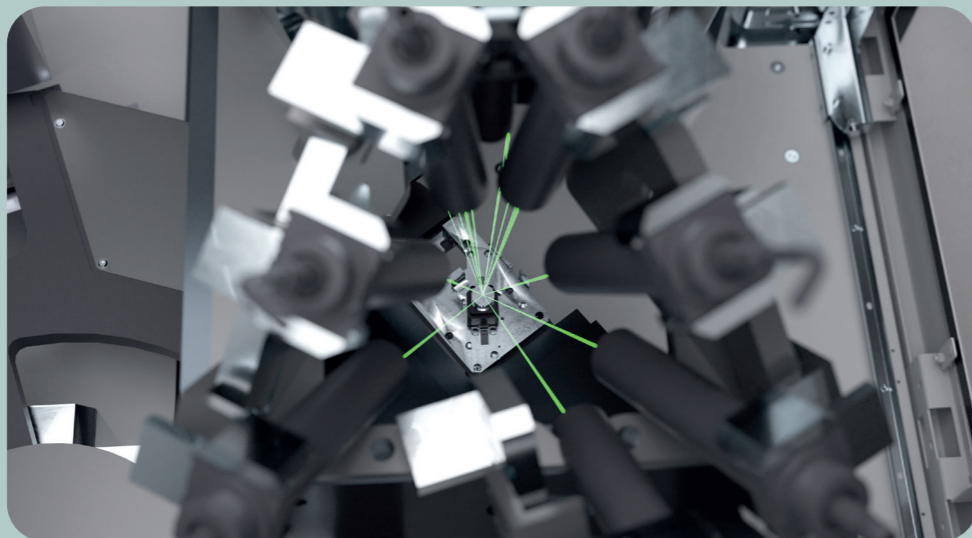




ACTIVE ALIGNMENT OF LENS AND IMAGER

As an expert in automation and robotics, Baumann offers first-class solutions for the precise alignment and fixing of lenses and imagers in cameras. Baumann has been active in the field of driver assistance systems for a long time and offers complete solutions for the assembly of cameras. The alignment of components with tolerances, such as lenses and imagers, is at the heart of ensuring optimal optical imaging. For this purpose, the necessary hardware and also the corresponding software were developed in the company to enable customized adaptation to the specific requirements of our customers.

The supply of the components as well as the removal of the completed cameras is carried out according to the individual customer requirements.



Of course, we attach great importance to clean production conditions. For this reason, our active alignment is equipped with ESD equipment and a laminar flow system (clean room design ISO 5).

The Baumann active alignment is available both as a standalone and as an inline cell. A wide range of options facilitates integration into assembly lines.

Baumann offers quality and functionality that convinces. Our pilot plant offers the possibility to produce prototypes.

PRODUCT CHARACTERISTICS

Equipment standard cell

- Equipment dimensions Standard: 1000 x 1500 x 2000 mm incl. Laminar Flow System
- Equipment dimensions scalable
- HMI: Touch screen and optional portable handheld control unit
- Feeding: manually or automatically
- Component transfer: rotary indexing table
- Cycle time: < 10 sec
- Stand-alone or in-line integration
- Prototype construction

Process modules

- Loading and unloading
- Pre-tests
- Different connection techniques
- Alignment collimator or chart based
- Quality tests

Technical features

- 5 or 6 axis alignment
- Lens-image alignment possible
- Standard collimator dome with a possible FOV of up to 180°
- Collimator dome freely adjustable
- Quick changeover to new products
- Clean room version ISO 5
- Standardised alignment software (changeable limits etc.)
- Database for process data
- Live transfer to production control system (Manufacturing Execution system)

